

# PTC Windchill® Workgroup Manager for ECAD

FASTER, EASIER COLLABORATION ON ELECTRICAL PCB DESIGN DATA

Adding electrical computer-aided design (ECAD) data to PTC Windchill creates a full product definition, thus improving collaboration and reducing the chances of error due to incomplete or out-of-date information.

By combining the heterogeneous CAD capabilities of PTC Windchill with our proven ECAD-related tools, you can now capture, control and share complex design information from Cadence, Mentor Graphics, Zuken or Altium within a single enterprise environment – and even within a single product structure.

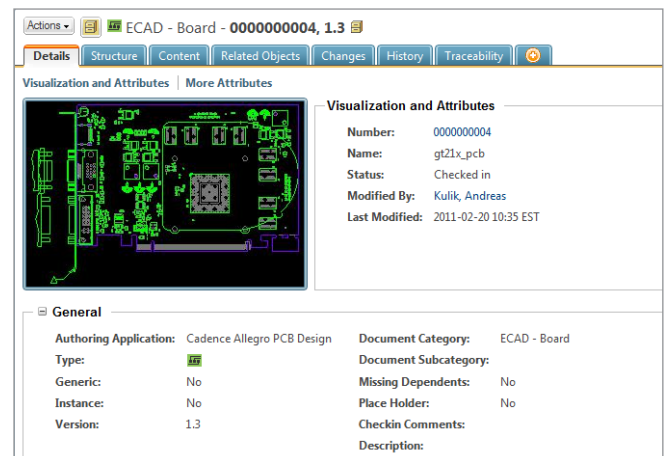
## Key Benefits

### Improve collaboration

- Share critical design information throughout both the enterprise and the extended value chain, while still maintaining complete access control
- Facilitate design collaboration and data management via a single, central repository provided by PTC Windchill
- Enable communication between users via centrally available markups

### Reduce errors

- Precisely control versions of native ECAD data while reducing the risk of using outdated product information
- Enforce standard design processes
- Optionally eliminate manual spot-checking of ECAD designs



ECAD data can be stored within PTC Windchill PDMLink®.

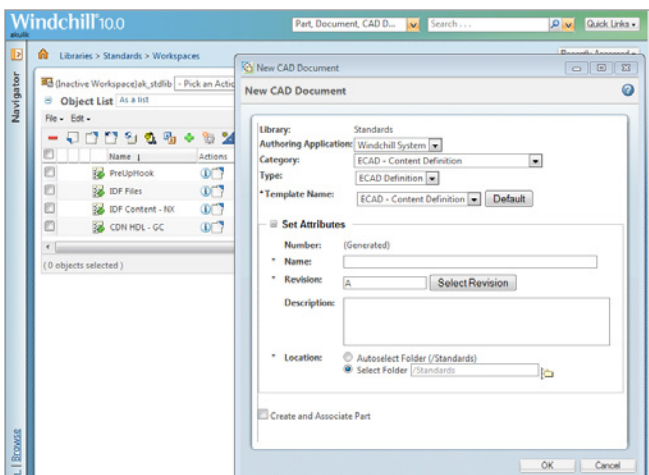
### Improve engineer efficiency

- Increase the reuse of existing designs
- Eliminate redundant design steps
- Allow individual contributors to review ECAD designs as they become available
- Display board and schematic information with the PTC Windchill Workgroup Manager for ECAD user interface
- Optionally display viewable data generated via the PTC Windchill Workgroup Manager for ECAD user interface

## Features

### Integral product data management

- Enable non-ECAD application users to access, mark up and collaborate on critical electrical design data
- Manage version-specific Cadence, Mentor Graphics, Zuken or Altium content plus specifications, text documents and any other product-related information to facilitate search and retrieval
- Enable users to organize and manage derived design information, such as artwork, drawings and IDF files within PTC Windchill
- Synchronize the mechanical bill-of-materials (BOM) with the electrical design BOM to eliminate redundancies and errors and provide reports and “where-used” searches
- Generate normalized, lightweight, viewable representations for simple design collaboration within PTC Windchill



Common configurations are stored and maintained in PTC Windchill.

### Configuration management

- Access PTC Windchill directly from within the ECAD application menu while providing versioning and iteration management
- Enable check-in and check-out of latest configurations
- Share electrical data across different “contexts” (e.g., products, libraries and projects) within PTC Windchill for true collaboration in an access-controlled environment
- Achieve direct integration with the process management capabilities of PTC Windchill, such as change management and product release processes
- Revise electrical design data managed in PTC Windchill directly from within the PTC Windchill Workgroup Manager interface

### Extensibility

- Apply extensive customization tools to execute any customer-defined processes, such as design simulation and data cleanup
- Consolidate BOM creation and work with a “clean” BOM in the PTC Windchill environment
- Work within a common user interface that supports multiple ECAD authoring solutions
- Extract single or variant BOM from design data and publish to PTC Windchill
- Provide notification to users of valid design data that resides on their desktop

## Support for PCB Tools

The end result of the PCB design process is a set of manufacturing files that get sent to a PCB manufacturer. This data is derived from the PCB design tools and is a vital element of the PCB design release to manufacturing process. To support this process, PTC also offers as a separate option PTC Windchill Workgroup Managers for PCB related tools such as CAM350 and BluePrint-PCB. This allows customers to:

- Easily manage PCB fabrication data within PTC Windchill
- Provide support for common PCB design release and manufacturing processes
- Validate that design data meets fabrication requirements
- Support the generation of files and documentation to create physical PCBs
- Automatically implement and identify ECO changes into a released PCB design
- Distribute data to downstream processes that focus on building the finished PCB

## Platform specifications

- Prerequisite: PTC Windchill PDMLink, PTC Windchill ProjectLink™
- Server Operating Systems
  - Microsoft Windows®: Windows 2003 Server (32-bit and 64-bit)
  - Unix®: Solaris, HP-UX, AIX
  - Linux (64-bit): Red Hat Enterprise® Linux 4
- Client Operating Systems
  - Microsoft Windows: XP, 2000, Windows 7
- Browser: Internet Explorer®, Mozilla Firefox®
- Database: Oracle® 11 and SQL Server® 2008
- Languages: English

For the most up-to-date platform support information, visit: [PTC.com/partners/hardware/current/support.htm](http://PTC.com/partners/hardware/current/support.htm)

© 2012, PTC. All rights reserved. Information described herein is furnished for informational use only, is subject to change without notice, and should not be construed as a guarantee, commitment, condition or offer by PTC. PTC, the PTC Logo, PTC Windchill, PTC Windchill PDMLink, PTC Windchill ProjectLink, and all PTC product names and logos are trademarks or registered trademarks of PTC and/or its subsidiaries in the United States and in other countries. All other product or company names are property of their respective owners. The timing of any product release, including any features or functionality, is subject to change at PTC's discretion.

J1238-PTC Windchill WGM for ECAD-DS-EN-1112